

Ipsen's SCADA system provides users with advanced furnace functionality, monitoring, reporting and analysis. A SCADA system allows users to capture and trend data, as well as provides the ability to log process data for future review. The system monitors vacuum levels and temperature, and it displays up to five main screens and their associated submenus, giving operators the ability to monitor and control several pieces of equipment at once.



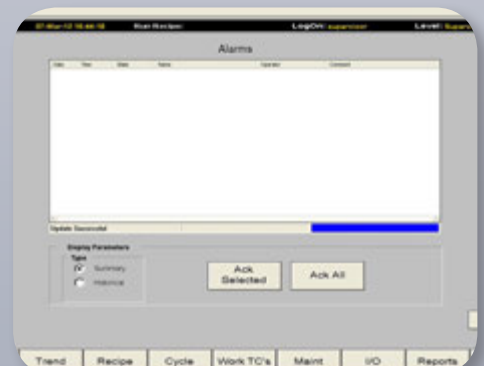
The SCADA system's intuitive design maximizes operator control using a user-friendly graphical interface and a highly advanced intelligence core to create a full-scale solution center. End users can view, alter and measure furnace data, as well as manage operational settings of multiple furnaces at once. The menu-driven screens permit operators to easily create, edit, store and execute process recipes on the fly.

Features of Ipsen's SCADA system include:

- Simultaneous, multi-task trending
- Rigorous data collection
- Dynamic recipe generation
- Intuitive, flexible reporting
- Tailored functionality, including:
 - Record cycle time
 - Track forced cooling duration
 - Adjust and control start sequence
 - Back up trend data
 - Access data by date
 - Create historical backups



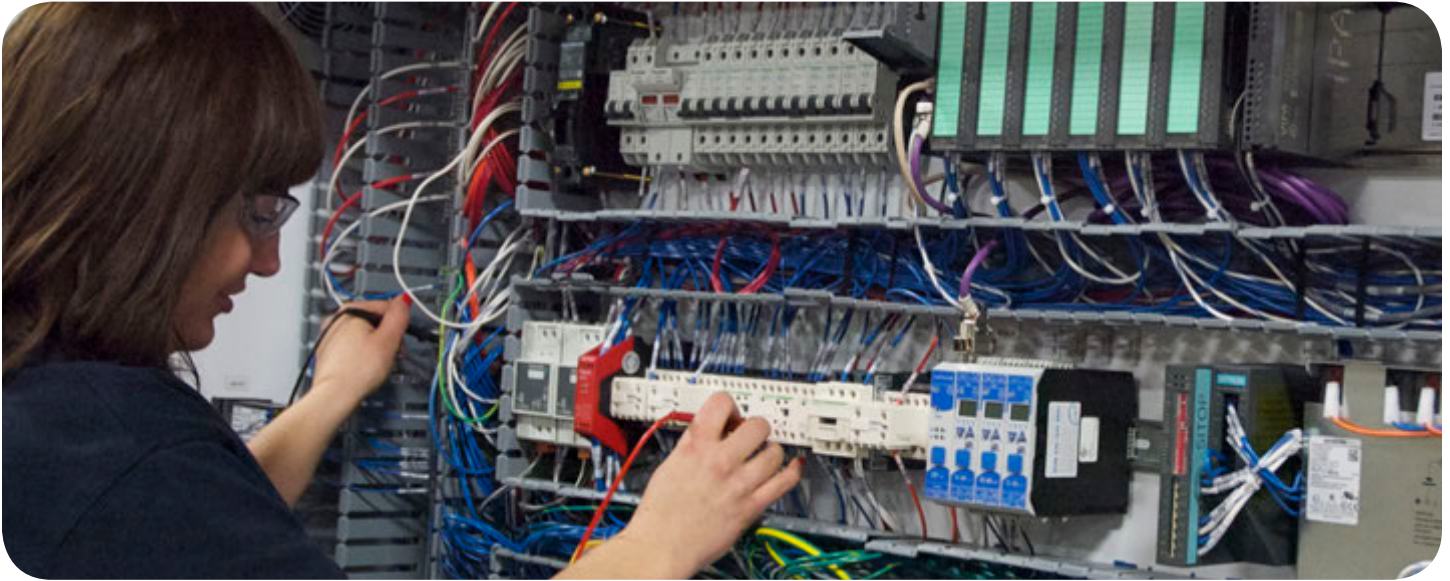
Learn more about Ipsen at www.IpsenUSA.com or contact Ipsen's Engineered Components Group at EngineeredComponents@IpsenUSA.com for more information.





Hard Work Wins

Engineered Components Group



Why Choose Ipsen?

When you choose Ipsen, our Engineered Components Group is here to keep your equipment up-to-date, operating at peak performance and capable of meeting ever-changing industry specifications. From state-of-the-art controls to upgrades and retrofits that expand your capabilities and increase your flexibility, Ipsen's Engineered Components Group delivers the solutions you need to succeed now and into the future.

Whether you have a furnace that is decades old or just a few years, we can provide upgrades and retrofits that give your furnace, and your business, a competitive edge. We also provide solutions for nearly every brand of heat-treating equipment so, if you need to get all of your furnaces working on the same platform or in a similar configuration, we can help.

Reaching and maintaining proper control and functionality of your equipment is paramount to achieving success in thermal processing. Our engineers can help you adjust, modify and upgrade your equipment and controls in order to achieve precise process control and better data collection and reporting, as well as minimize human error. Fine-tune your process with newer, more automated controls. Collect more precise data to better measure and improve your processes, upgrade your hot zone or equipment to expand your capabilities – the possibilities are endless. Choosing Ipsen means choosing a partner in success.

Ipsen USA



984 Ipsen Road
Cherry Valley, IL 61016
800.727.7625



1946 E. Cherry Lane
Souderton, PA 18964
800.359.7675